

START SOMETHING

BIG



Little Brother Luis & Big Brother Tony

2014 Annual Report



Big Brothers Big Sisters
of Orange County | The Inland Empire

A Message from the CEO & Board Chairman



We could not be more proud of the agency's accomplishments over the past year as documented in this 2014 Annual Report. The breadth and depth of services Big Brothers Big Sisters of Orange County & the Inland Empire extended to our community's at-risk youth increased materially this past year while at the same time the agency maintained a strong financial footing.

More specifically, the organization helped nearly 2,700 children in our community in 2014, a 19% increase. We strengthened the quality of those matches by adding more robust training and providing value added services such as our Destination College program. The agency also improved match support by decreasing case management ratios and solidified our expansion into the Inland Empire, more than doubling the number of children served there to over 450 in just our second year.

This past year our volunteers donated over 200,000 hours of time to their "Littles" and that time has truly paid off. 98% of our 12th grade "Littles" graduated from high school on time and 83% of them enrolled in college. Adding to our "Littles" tremendous achievement, 70% of them were the first in their family to earn a high school diploma.

The agency also focused on financial sustainability and worked to build upon existing relationships, as well as to develop prosperous new ones. The goal is to run our organization as any of our supporters would run their own successful business. We are proud to report we ended the fiscal year increasing revenue 38% and providing a net surplus of \$135,000.

Finally, you will read about our "Next Big Thing," the agency's planned move to a larger location and the pre-requisite capital campaign. The flip side of tripling the number of children served over the last decade is the lack of space for staff and volunteer training. We are very fortunate to have strong initial support from our board members and others, but we still need more help! We hope that you will consider supporting our future by contributing to the capital campaign; we won't let you down!

On behalf of Big Brothers Big Sisters of Orange County & the Inland Empire, thank you for your engagement and support of our cause. We look forward to continuing to work with you to change the lives of children in our community for the better, forever.

Best regards,

Melissa Beck
Chief Executive Officer

Tim Crosson
Chairman of the Board



BOARD OF DIRECTORS

Pamela **Adams**
Olivia **Albrecht**
Todd **Anderson**
Tim **Andrews**
Doug **Antone**
Patricia **Arvielo**
Rudy J. **Baldoni**
Ellen **Bancroft**
Charles **Black**
Steven **Blanc**
Carrie **Block**
Erich **Bollinger**
Steve **Borowski**
Erin **Boyl**
Brad **Coleman**
Tim **Crosson**
Brian **Davis**
Peter **Desforges**
Erik **DiPaolo**
Michael **Fox**
Robert **Friedman**
Paul **Fruchbom**
Elliot **Gordon**
Susan **Hamar**
Adrian **Harrison**
Steve **Holley**
Chris **Ivey**
Scharrell **Jackson**
Kelly **Johnston**
Edward **Lieskovan**
Patrick **Maciariello**
Navin **Narang**
Scott **Nelson**
John **Nicoletti**
Enrique **Perez**
Todd **Pickup**
Chris **Reedy**
Mark **Rutherford**
Tim **Ryan**
Caroline E. **Siefert-Sabo**
Marilyn **Stemper**
Brian **Stevens**
Darren **Thomas**
Kim **Thompson**
Bradley **Todd**
Henry **Walker**
Gary E. **Wilson**

CORPORATE BOARD MEMBERS

Micheal **Denzinger**, US Bank
David **Deweese**, COX
Communications
Kunal **Hinduja**, ARQ, LLC

Little Sister Alejandra & Big Sister Jacquelyn



It's the little things that Katherine does that have made the biggest impact on my life. She doesn't pity me, she constantly pushes me to succeed. She inspires me to give my best and I can look in the mirror and say **'I am beautiful and I love who I am' and I actually mean it.** I can never repay her for everything she has done for me."

—Jocelyn

WHAT WE BELIEVE:

All children have the ability to achieve success in life and live up to their full potential.

HOW WE ACHIEVE IT:

By providing children a strong and enduring, professionally supported, 1 to 1 mentoring relationship.

WHY WE DO WHAT WE DO:

To change the life of a child for the better, forever!

04

Our "Littles"

“We served nearly 2,700 children

CHILDREN FACING ADVERSITY



55% of "Littles" have been exposed to abuse, violence or neglect



60% of "Littles" parents did not begin high school



31% of "Littles" have had an incarcerated parent



75% of "Littles" come from single-parent households

Children from single-parent households make up ...



71% of high school dropouts



90% of runaways



63% of teen suicides



90% of juvenile court cases



Teen girls from single parent households are **30%** more likely to become pregnant

DID YOU KNOW

150 children come to our agency for a mentor every month

05
Our Impact

Our **impact** when matched with a “Big”...



98%
Graduate high school ON-TIME



83%
Enroll in COLLEGE



75%
MORE LIKELY to obtain a bachelors degree

With a “Big”, “Littles” report

83% Better attitude towards school

71% Improved academic performance

89% Higher self-esteem

70%
of graduating “Littles” were 1st in their family to graduate high school



SOURCE: 2013-2014 YOUTH OUTCOME SURVEY



Littles: Viviana, Jose, Jose, Victoria, Luis, Areli

06

Our
Programs

Programs

Big Brothers Big Sisters makes meaningful, mentor matches between adult volunteers “Bigs” and children “Littles”, ages 6 through 18, in our local community. We provide this mentoring support to at risk youth across several platforms.

- **Community-Based:** Each match plans their own outings filled with shared interests like shooting hoops, going to the park or just talking.
- **Site-Based:** Beyond School Walls is a one-to-one professionally supported mentoring program where a school is paired with a corporation and matches meet in a facilitated program, once a month, after school at the sponsoring company.
- **High School “Bigs”** sited-based program, qualified high school students are the mentors and the “Littles” are elementary and middle school aged children.



Little Sister Areli & Big Sister Alexa

WHAT WE DO:

- **QUALIFY** all prospective “Littles” for need and capacity for match success. (There is no recruiting of “Littles”, word of our program within the community leads to over 150 applicants per month.)
- **RECRUIT** volunteer “Bigs” from across the community through referral, advertising, social media, Lunch & Learn Outreach to local business and potential events.
- **VET** all prospective volunteer mentors through interviews and extensive background checks
- **MATCH** a “Little” to a “Big” based upon multiple variables with a goal of making a deep connection and creating a long-term relationship
- **SUPPORT** “Bigs” as they address the multitudes of challenges their “Littles” face
- **PROVIDE** curriculum for and oversight of site-based match days
- **MONITOR** all matches by qualified staff through monthly and quarterly conversations with each “Big”, “Little” and parent.

DID
YOU
KNOW

Our volunteers donate over **200,000** hours of service to their “Littles” every year

07 Community Programs



Destination Health



Big Brothers Big Sisters
of Orange County • The Inland Empire

Destination Health is a Community-Based mentoring program featuring over 100 health related events, and was developed to provide “Bigs”, “Littles”, and parents of “Littles” more opportunities to engage in activities and obtain education centered on being physically active and more mindful of good nutrition and health habits.



Destination College+



Big Brothers Big Sisters
of Orange County • The Inland Empire

Destination College+ is a support arm of the Community-Based mentoring program, providing “Littles” with tools and resources to stay on track toward on-time high school graduation and to guide them towards college readiness and college entry. By partnering with great organizations and educational institutions such as The Princeton Review, California State University, Fullerton, UC Irvine, USC, Oakley, and CareerBeam, we are able to offer our “Littles” ACT/SAT test prep classes, college campus tours, financial aid assistance, college scholarships, laptop computers for graduates, and career planning and preparation. In our new facility the Destination College Resources Room will provide our “Littles” access to computer printers, Internet access, ACT/SAT study guides and tests and other college resources.

Larry Wozniak, “Big” of the Year

According to Ana, the single parent of two small children, she was “scared and alone” when she came to Big Brothers Big Sisters for help. Her children were dealing with the murder of their younger sister and the loss of their father, who was sent to jail for her death. She was especially afraid for her only son and a school counselor recommended she inquire about Big Brothers Big Sisters for Geoffrey. He was 8 years old at the time when Geoffrey met his new Big Brother, Larry. This first meeting can feel awkward and forced, but Geoffrey has shared that it was one of the most exciting days of his life and the start of something that would change his life, forever.



Larry has always encouraged me to be the best I can be.”

—Geoffrey

Larry and Geoffrey have been matched for 9 years and Larry has shaped the young man Geoffrey has become. They have been on hundreds of outings and spent thousands of hours together. Through one such outing to a UCLA football game Geoffrey was introduced to a sport that he now loves. Larry says that Geoffrey is one of the most athletic individuals he has ever met and, while he was once shy and quiet, today he is mature beyond his years and incredibly caring and kind to others. Geoffrey was one of the first in his family to graduate from high school in 2014, he plans to study criminal justice just like Larry. For Larry, Geoffrey has re-affirmed his outlook on life, noting that in the face of great challenge, Geoffrey has taught him about staying positive.

08

Site-based
Programs

Site-based Programs

ABOUT BEYOND SCHOOL WALLS (BSW)

Beyond School Walls is a one-to-one professionally supported mentoring program where a school is paired with a corporation and matches meet in a facilitated program, once a month, after school at the sponsoring company.

BELIEVE IN THE FUTURE

We serve at-risk youth that are in need of a role model to help them believe in their future. These youth are our “Littles” and we match them with a corporate professional that mentors them once each month for an entire school year.

BSW
STUDENTS

80% AVOID risky
behavior

63% FEEL more
socially accepted

SCHOOL PREPAREDNESS

We support our “Littles” through curriculum and activities that reinforce what they are learning in the classroom. Our corporate professional “Bigs” help their “Littles” navigate the current academic environment and provide consistent support.

BSW
STUDENTS

49% ARE more
school ready

74% GET better
grades

WORKPLACE READINESS

We encourage our “Littles” to dream BIG, by helping them to create a vision and goals for their future. Each mentoring session is held on-site at our corporate partners office, providing a glimpse into the possibilities to come.

BSW
STUDENTS

80% WILL do better
in school

80% HAVE a sense of
the future

BEYOND SCHOOL WALLS PARTNERS



PIMCO
FOUNDATION



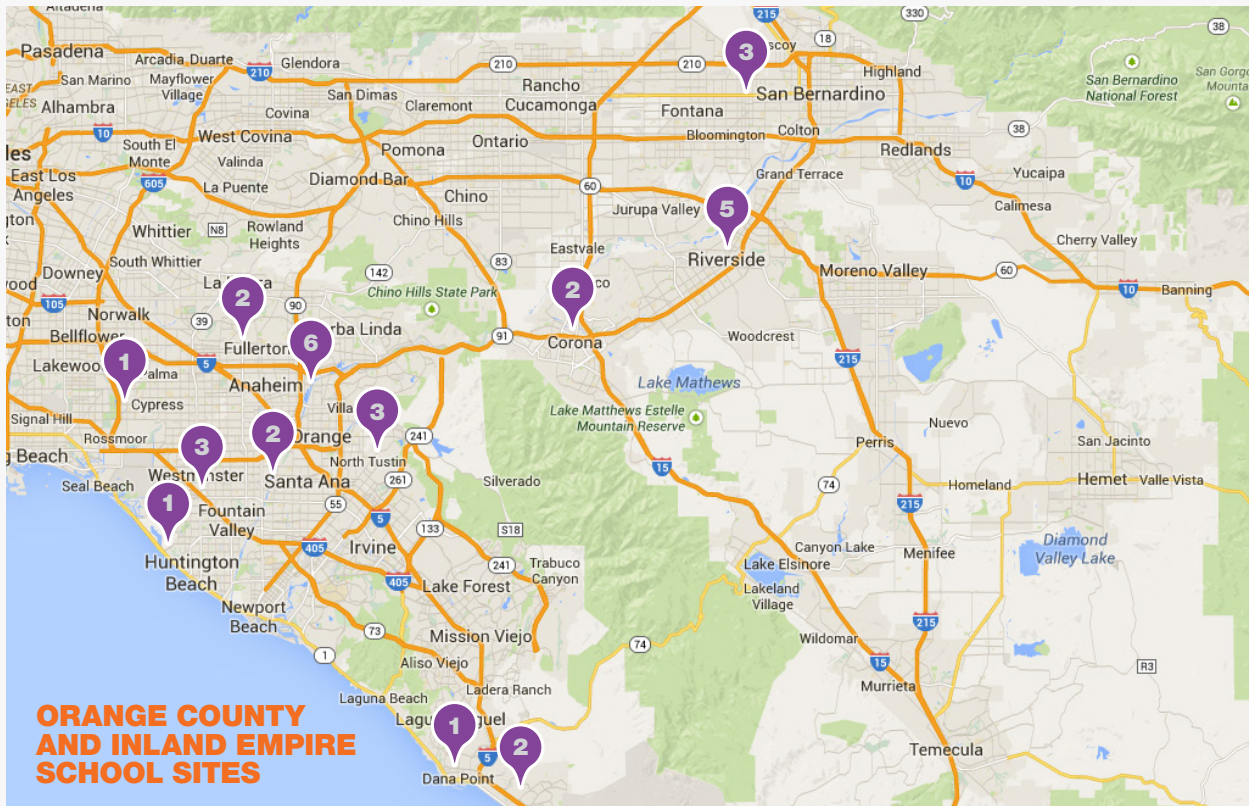
DID
YOU
KNOW

Angelitos de Oro has donated over
\$5,000,000 to our High School “Bigs” program

09
Site-based
Programs

High School “Bigs”

Sited-based program, qualified high school students are the mentors and the “Littles” are elementary and middle school aged children.

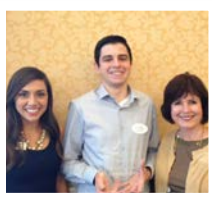


**ORANGE COUNTY
AND INLAND EMPIRE
SCHOOL SITES**

HIGH SCHOOL “BIGS” OF THE YEAR

ORANGE COUNTY:

“Big” of the Year: Chris Ayers, Beckman High School
Match site: Beswick Elementary, Tustin, Calif.



Exuding a positive attitude, Chris is an exceptional Big Brother because he is committed and dedicated to his Little Brother. He has an outstanding attendance record at his site and goes out of his way to help set up and clean up after site. These actions and more make him a great role model for his

Little Brother. Chris inspires his Little Brother to refocus and recommit academically and encourages him to participate in social activities. He takes a holistic approach to mentoring his Little Brother, and the two share a very special bond.

INLAND EMPIRE:

“Big” of the Year: Yazmin Aranda, Pacific High School
Match site: Urbita Elementary, San Bernardino, Calif.



Yazmin Aranda is a shining example of what it means to be a Big Sister in our High School “Bigs” Program. Even when she transferred high schools to the other side of town, she kept her commitment and met with her Little Sister every Tuesday. Yazmin embraced what it means

to be a positive role model and mentor. She led by example with her Little Sister, which resulted in sizable development in Little Sister’s self-confidence. Genuine and caring, Yazmin made a visible impact on the life of her Little Sister.

HIGH SCHOOL “BIGS” SITES

ORANGE COUNTY ELEMENTARY SCHOOLS

Benjamin Franklin
Beswick
Diamond
Faylane
Hanson
Heidiman
Kennedy
Kinoshita
Lawrence
Melrose
Oak View
Olive Street
Orangethorpe
Patrick Henry
Pyles
RH Dana
Rio Vista
Ruby Drive
San Juan Capistrano
Topaz
Veeh
Wakeham
Walter

INLAND EMPIRE ELEMENTARY SCHOOLS

Arlanza
Collette
Fairfax
Jackson
Jefferson Corona
Jefferson Riverside
Madison
Riley
Stalling
Urbita

10 Measurement

How we measure what we do...

Big Brothers Big Sisters has perfected the way we measure our impact. Our record for child safety is **10 TIMES THE NATIONAL AVERAGE.**



Big Brother Damian & Little Brother Jose



Group of "Bigs" & "Littles"



Little Sister Victoria & Big Sister Tracy

ABOUT THE YOUTH OUTCOME SURVEY

The Youth Outcome Survey (YOS) is the key component of our outcome evaluation system. The YOS is designed to construct measures of impact and to capture data on the progress of each individual match relationship, including:

- 1. Education Success**
- 2. Avoidance/reduction of risky behavior**
- 3. Socioemotional competence**

Administered at the beginning of each match and at the end of each school year thereafter, the framework of the YOS was developed by three of the leading researchers in the field, Dr. Rhodes from the University of Massachusetts, Dr. Grossman from Princeton University, and Dr. Herrera from Public Private Ventures.

ABOUT THE STRENGTH OF RELATIONSHIP SURVEY

The Strength of Relationship (SOR) survey is a powerful instrument designed to help achieve higher program quality. The SOR measure can be used to effectively track match progress and increase the probability that the match can be retained and outcomes achieved.



80% of "Littles" report an increase in academic achievement



83% show improved attitude towards school and teachers



77% avoid substance abuse



89% have improved self confidence & self worth



77% report better decision making



70% less likely to use drugs

“ Each year our organization strives to remove all kids off the wait list through strategic planning and concentrated fundraising. Did you know **60% more kids inquired about “Bigs” this year than last?**”

11
Financials

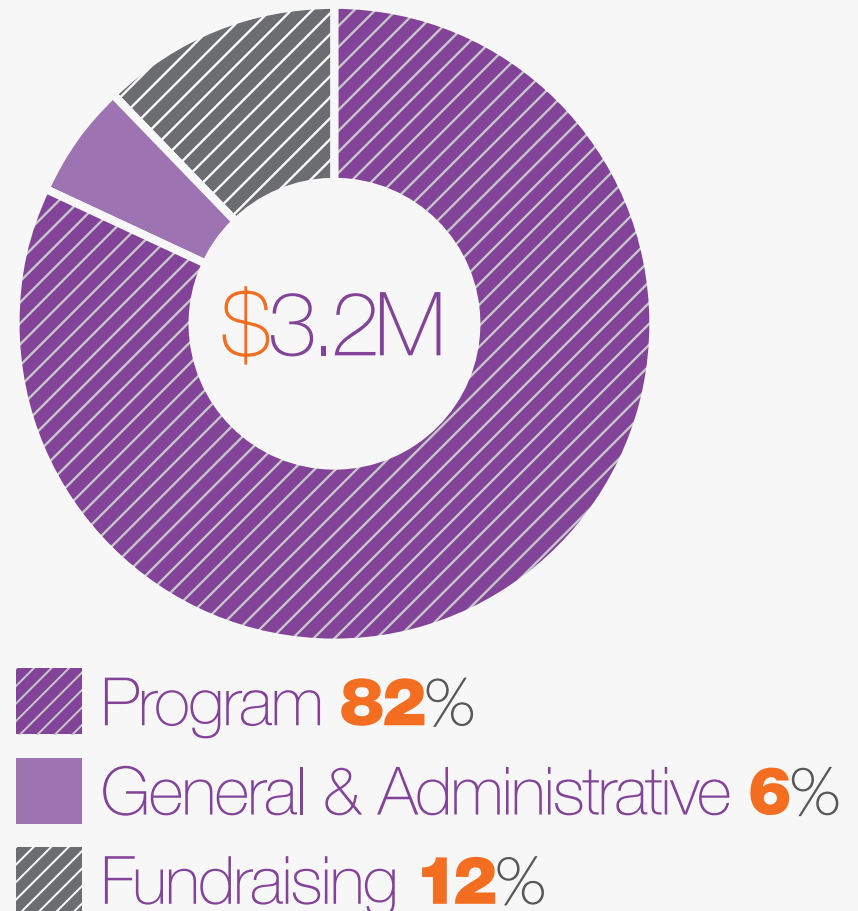
REVENUE



BALANCE SHEET

Cash	\$984,304
Gifts + Grants Receivable	\$685,412
Prepaid Expenses + Other	\$145,472
Total Current Assets	\$1,815,188
Net Property & Equip	\$858,185
Other Non-Current Assets	\$76,016
Total Assets	\$2,749,389
Accounts Payable	\$53,614
Accrued Liabilities	\$226,603
Total Current Liabilities	\$280,217
Unrestricted Net Assets	\$2,416,657
Temporarily Restricted Net Assets	\$52,515
Total Liabilities & Net Assets	\$2,749,389

EXPENSES



12
Events

Fund Development & Events

Annual Golf Tournament MAY

For over 37 years the Annual Golf Tournament has been a signature fundraising event supporting our children. This highly-anticipated and county-wide tournament nets approximately \$200,000 each year which directly benefits our program.



Change A Life Luncheon SEPTEMBER

The Change A Life Luncheon is our annual women's event designed to celebrate the power of women in our community. We bring together over 200 women to hear from keynote speakers that inspire, influence and ignite change. All proceeds from the luncheon directly benefit our programs. Scheduled for February 2016

Annual Gourmet Dinner OCTOBER

Referred to as the "premier networking event in Orange County," raising nearly \$1 million in 2014, Big Brothers Big Sisters has celebrated the Annual "Gourmet Dinner" for over 50 years. The organization's largest annual fundraiser brings together more than 450 of Orange County's most influential and impactful people.



DID
YOU
KNOW

42% of our Revenue is raised through our Events. We appreciate your support in helping make these events a BIG success and look forward to an even more impressive 2015

13
Events



Stars & Stripes

JUNE

The Stars & Stripes tournament is a world-class charity fundraiser that combines spectacular deep-sea fishing and golf on Mexico's finest courses with beautiful accommodations and top-notch musical entertainment. Started in 1996 to benefit Big Brothers & Big Sisters of Orange County, it is now independently managed. In 2014 Stars & Stripes supported our programs in the amount of \$500,000. The hugely popular event has raised and donated more than \$20 million to youth charities over its 18-year history. It creates lasting memories for the organizations it assists and those participating in the event each year.



Angelitos Card

OCTOBER

Angelitos de Oro is a women's auxiliary that supports Big Brothers Big Sisters of Orange County. Each October, Angelitos de Oro sells a shopping card to local shoppers exclusively for South Coast Plaza Shops and Restaurants. This \$60 donation provides consumers access to a 20% discount for an entire week while donating to help children find mentors. Additionally, on the kick-off day, participating stores give an additional 10% back to the agency. Angelitos de Oro has been supporting Big Brothers Big Sisters of Orange County since 1961 and has cumulatively raised over \$5 million for our programs.



14
Donors



ACT Anaheim 2014 Inaugural Grant

Big Brothers Big Sisters is extremely honored to have been selected as a 2014 ACT Anaheim Inaugural Grantee for \$150,000. The ACT grant has enabled Big Brothers Big Sisters to expand the High School "Bigs" Program to Anaheim for the first time to serve students attending Olive Street, Franklin and Patrick Henry Elementary Schools in Anaheim, and it has supported the increase in service levels within our traditional community-based program. The ACT Anaheim grant will support over 200 youth that are Anaheim residents and provide them with mentorship and access to enrichment and activities that they otherwise may never have.

\$500,000+

A. Gary Anderson Family Foundation
Auction.com
Todd and Natalie Pickup

\$250,000+

Angelitos de Oro
Stars and Stripes in Association with GSF Foundation

\$100,000+

ACT Anaheim - Orange County
Community Foundation
Marie and Tim Crosson
The California Endowment

\$50,000+

Doug and Catherine Antone
Megan and Brian Davis
Devto Fund (a donor advised fund at the Desert
Community Foundation) - Todd and Natalie Pickup
Disneyland Resort - John Nicoletti
Experian
Harriet E. Pfleger Foundation
Ueberroth Family Foundation

\$20,000+

Affordable Housing Access, Inc.
David Ahmanson
Albert J. Crosson Family Foundation
J. Todd Anderson
AT&T
Steve and Phyllis Blanc
City of Stanton
Compass Group Management, LLC
Suzanne and Peter Desforges
Farmers & Merchants Bank - Henry Walker
First American Financial Corporation

Norma and Paul Fruchbom
Scott and Karen Green
Susan and Jeff Hamar
Howard Building Corporation
Irvine BMW MINI
Jack In The Box
Joe MacPherson Foundation
Edward M. and Siwen Hu-Lieskován
Jere Lipofsky
Nerium
James Previti Family Foundation
PwC Foundation - Gary Wilson
Raging Waters San Dimas
Redbrick Health Corporation
Thomas A. Reyes
Elias and Caroline Sabo
Polly and Joe Ueberroth
The Crean Foundation
U.S. Bancorp Foundation
Russell Van Cleve
Wells Fargo Foundation

\$10,000+

Aon Foundation
Patricia and Rick Arvielo
Borowski Family
City of Anaheim
C-Level Management
Croul Family Foundation
Ken Cruse
David August
Ernst & Young U.S. LLP
Elliot and Sheila Gordon
David Harvey
Hausman Family Foundation
Insurance Industry Charitable Foundation
Fiona and Christopher D. Ivey

James Hardie
Guy K. Johnson
KPMG
Latham & Watkins LLP
Aleeza and Patrick Maciariello
Mariners Church
Mathis Brothers Furniture
Julian V. Movsesian
Mara and Keith Murray
Becky and Navin Narang
Michael Nevell
New American Funding - Patricia and Rick Arvielo
OMB, Inc.
Pacific Hospitality Group
Pacific Life Foundation
Richard Pickup
Reedy Family
Rolls Royce Motor Cars Orange County
Adam M. Roseman
Rutan & Tucker, LLP - Kim Thompson
SA Recycling
Stradling Yocca Carlson & Rauth - Christopher Ivey
Susan Scott Foundation
The Capital Group Companies
Charitable Foundation
The Josephine Herbert Gleis Foundation
Tilly's Life Center
Leila and Darren Thomas
Towers Watson - Michael Fox
Union Bank, N.A. Trust Department
United Way Corona-Norco
United Way of the Inland Valleys
US Trust - Thomas J. Neito
VPM Management



A. Gary Anderson Family Foundation

In 2013, The A. Gary Anderson Family Foundation, a long-time supporter, awarded Big Brothers Big Sisters a five year, \$2.5M grant to support the expansion of our programs to the Inland Empire. Through professional business activities and generous philanthropy, A. Gary Anderson made a lasting impression on the Inland Empire region, and today, his family continues his tradition of generosity to impact at-risk youth through communities in the Inland Empire. As a result of this grant our expansion efforts to this region has already impacted over 500 youth.

15
Donors

\$5,000+

2003 Eagle Foundation
 Pamela M. Adams
 Aetna
 Allergan
 Angels Baseball
 Mary and Rudy Baldoni
 David Ball
 Ellen Bancroft
 Kim and Tom Bengard
 Philip Berry
 Big Brothers Big Sisters of America
 Lisa and Erich Bollinger
 Dorothy Booth
 Romir Bosu
 Daniel Callahan
 CareerArc
 Blake Christian
 Norm Christiansen
 Cla-Val
 Julia and Brad Coleman
 County of Riverside
 Cox Communications, Inc.
 Carol and Jerry Denham
 Devto Fund (a donor advised fund at the Desert Community Foundation) - Joe Moody
 Edison International
 Bradley N. Etter
 Fidelity Investments
 Friedman Family Foundation
 Frome Family Foundation
 Gala Investments LTD
 Galleher, Inc.
 Glenmorangie Scotch
 Golden State Foods
 Steve Holder
 J. Stanley and Mary W. Johnson Family Foundation

Jet Methods
 Joe Juliano
 KDF Communities - Paul Fruchbom
 Michael Kelly
 Lon V. Smith Foundation
 Anne L. MacPherson
 Majestic Realty Co.
 Mary E. Moore Family Foundation
 Rit Mathis
 Mellor Family Foundation
 Ruben Mendoza
 Patrick O'Neill
 OneOC
 Vince Paglia
 Linda and Stephen Petilli
 PF Realty, LLC - Paul Fruchbom
 Picerne Family Foundation
 PricewaterhouseCoopers LLP - Gary Wilson
 Pro Unlimited, Inc.
 Robert and Helga Pralle Family Foundation
 Denise and Mark Rutherford
 San Manuel Band Of Mission Indians
 John Saunders
 Kylie Schuyler
 Bert Selva
 Angie and Michael Sheha
 Scharrell Jackson
 SuccessFactors
 The Allergan Foundation
 The Color Run LLC
 The Munson Family Foundation
 Levecke Family Foundation
 The TJX Foundation, Inc.
 UnitedHealthcare Insurance Company
 Vizio, Inc.
 Waltmar Foundation, Inc.
 Tracy and Rick Weiner

Western National Group
 Bonnie and Gary Wilson
 Woodruff Sawyer & Company

\$1,000+

AG Adriano Goldschmied Inc.
 Olivia Albrecht and Lukas Pieter
 Milind Ambe
 Darin Anderson
 Timothy K. Andrews
 Anthony Ansevin
 Peter Antone
 APAX Foundation
 Art & Creativity for Healing Inc.
 Dr. Rudolph C. Baldoni
 Tim J. Ballard
 Borna Bandari
 Bank of America Charitable Foundation
 Bank of America Merrill Lynch
 Beacon Pointe Wealth Advisors
 Berteau Foundation
 Best Best & Krieger LLP
 Beyond Blue Holdings Inc.
 Alex Bhathal
 David Birkett
 Brett Bissell
 Frania and Charles R. Black
 Carrie and Ken Block
 BNY Mellon
 Boggeln & Company Inc
 Bonakdar Institute
 Ross Bourne
 Dane Bower
 Erin and Jack Boyl
 Broadcom Foundation
 California Bank & Trust
 California Community Foundation

16 Donors



Rob Friedman's career as a 20 year real estate veteran and current Chairman of Auction.com is paralleled only by his philanthropic endeavors. A supporter of Big Brothers Big Sisters for over 3 decades he has been a transformative member of the Board of Directors since 1992. Rob and Auction.com have given millions of dollars to various organizations and their commitment to the causes they believe in has grown along side the tremendous success they have achieved.

Dale Camera
Car Program Inc.
Carl E. Wynn Foundation
Eric Carter
CBRE
Michael Chadwick
Clty National Bank
City of Orange
CM Partners Group
Columbia Steel Inc.
Mark Conway
Diane Coon
Debra C. Corley
Brendan Cotter
Susan Cox
Darden Restaurants Inc. Foundation
Jeff Demaio
Erik and Kathleen DiPaolo
Donna Karan Inc.
Andrew Dossett
Kathryn Downs
Chris Dubia
Educational Resource Development Trust
Edwards Lifesciences
Gary Edwards
Equinox Fitness
Evista Environmental
Mary and Michael Fox
Donald Frail
Mike Gallegos
Ron Geisen
Thomas Gore
Michael Gottlieb
Grant Thornton
Ed Grech
Robert Greenberg
Victor Gruber

Ryan Guthrie
Adrian Harrison
Sherri and Michael Haviken
Joe Heffington
Michael Hellmers
Al W. Hensling
Kunal Hinduja
Heather and Steve Holley
Hom Real Estate Group Inc.
Bradley Hontz
Sara and Tom Hopper
Mark Hurray
In-n-Out Burger Foundation
Integral Partners LLC
Invensys Systems Inc.
Scharrell Jackson
John Wright
Carl Johnson
Steve Johnson
JP Morgan Chase Foundation - Charles Black
Sinan Kanatsiz
Sloane and Kevin Keane
Don Kennedy
Raymond Kennedy
Shannon Kennedy
Kevin King
Gene Ku
Steven Leavitt
Jeff Loeffelman
Los Angeles Galaxy
Lucille Ellis Simon Foundation
Kevin Mahoney
Quentin Marshall
Doug Martinez
Steve Mauldin
Joseph McCarthy
Yvette and Kevin McCarthy

Jamie McGhee
McGladrey LLP
Joseph McKnight
Steve Mensinger
Gene Mergelmeyer
David Meulmester
Midkiff Family Foundation
Steven Miranda
Mark L. Moehlman
Kristen Monson
Montage Hotel & Resort
Robert Moore
Morgan, Lewis, & Bockius LLP
Melanie Nakamura
NCRE Professionals Inc.
Jennifer Necir
Scott S. Nelson
Newport Beach Vineyards & Winery
Thomas J. Nieto
Zachary Niles
Oakley
Calen Offield
Palmieri, Tyler, Weiner, Wilhelm & Waldron LLP
Parker Hannifin Foundation
Douglas Pasquale
Enrique Perez
Laurie and Dan Peterson
Adam Pohl
Jeff Purser
Pythian Youth Camp
Razoo Foundation
Reliance Steel & Aluminum Co
Mike Rich
Barbara and Brian Richardson
Riverside Rotary Foundation
Roger Dunn Golf Shops
Jeff Roos

17 Donors

Ben Roth
RR Donnelley
Steve Rudkin
Donna and Charles Runyon
Rodney Sacks
Sedgwick Claims Management Services, Inc.
David Seidner
Semptra Energy Foundation/
Employee Giving Network
Edward and Helen Shambrom Family Fund

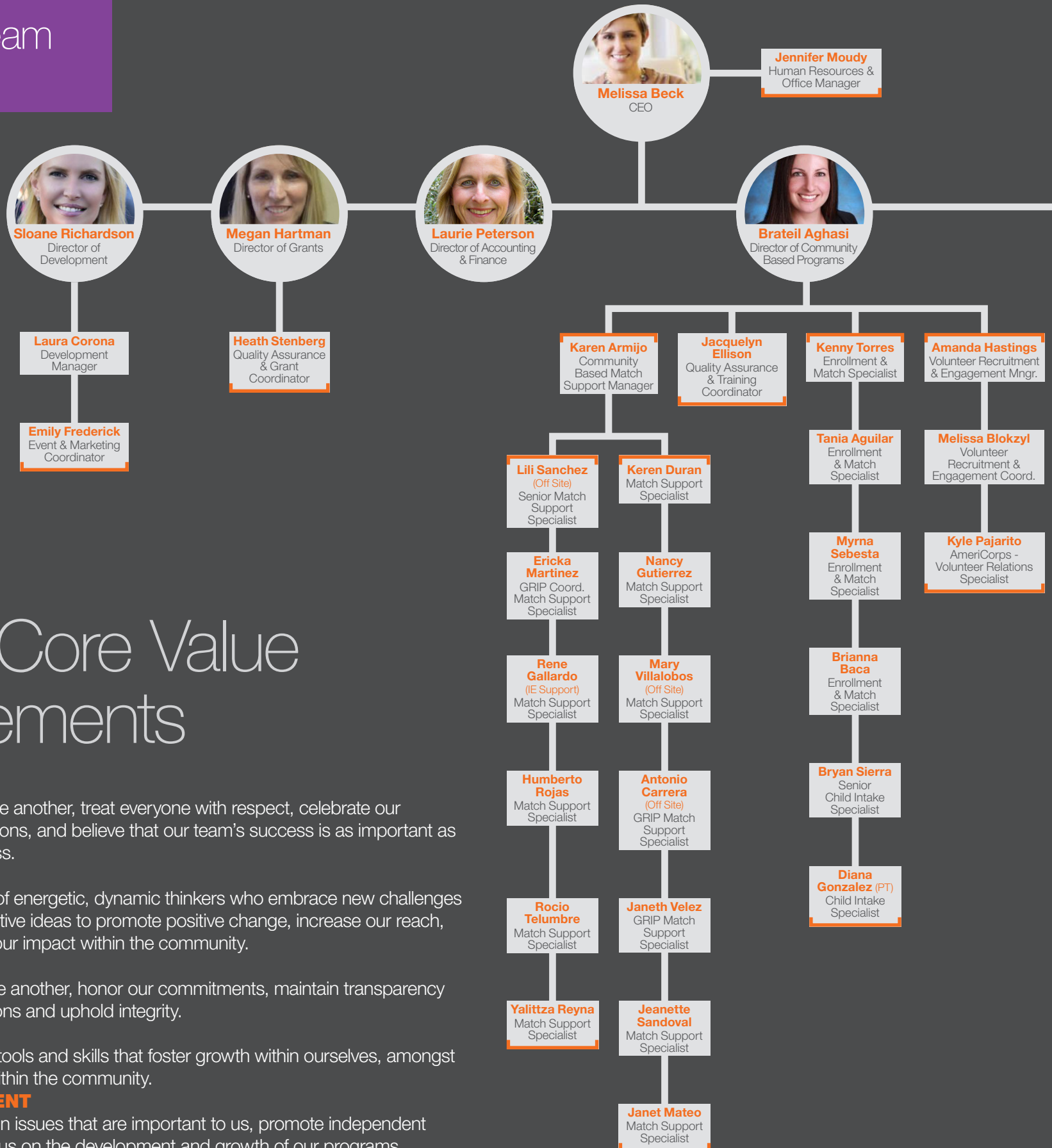
Rick Sharga
Shea Homes
Matt Smith
Marshall Solomon
Daniel Sonenshine
St. John's Knits Inc.
St. Joseph Health
Alan Stearns
Richard and Elizabeth Steele Fund
Marilyn Stemper

Rebecca and Brian Stevens
Camille and Tim Strader Jr.
Robert Summers
Sunstone Hotel TRS Lessee Inc
Taco Bell
The Community Foundation
The Northern Trust Company
The PIMCO Foundation
The Reedy Vineyard
The Robinson Foundation
Tito's Vodka
Cara and Brad Todd
Chris Tooker
Transamerica Life Insurance
Dean Treister
TRUIST
Tustin Community Foundation
Joel Van Boom
VIP Limousines & Coaches
Michael Wagschal
Mert Wallen
Sandy Chang and Wally Wong
Ronnie Weidman
William Weintraub
Kyle B. Wescoat
Western Digital Foundation
Wheel Fun Rentals
Arvin Wijay
Roger Williams
Windermere Inland Properties Inc.
Wireless Emporium
Sharon and Greg Wohl
Steve Zotovitch



Little Brother Luis & Big Brother Tony

18 Our Team



Our Core Value Statements

UNITY

We empower one another, treat everyone with respect, celebrate our unique contributions, and believe that our team's success is as important as individual success.

DYNAMISM

We are a group of energetic, dynamic thinkers who embrace new challenges and value innovative ideas to promote positive change, increase our reach, and strengthen our impact within the community.

TRUST

We believe in one another, honor our commitments, maintain transparency through our actions and uphold integrity.

BALANCE

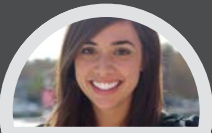
We cultivate the tools and skills that foster growth within ourselves, amongst our peers and within the community.

EMPOWERMENT

We take action on issues that are important to us, promote independent thinking, and focus on the development and growth of our programs.

19 Our "Bigs"

List of "Bigs" by Anniversary



Jessica Prescott
Director of Site Based Programs



Jennifer O'Farrell
Exec Director Inland Empire



12 YEARS

Bill Brooks

10 YEARS

Steve Blanc
Mark Strockis

9 YEARS

Beth Barber
Michelle Fells
Wendy Lee
David Lee
Adrian Punderson
Richard Robbins
Christy Stoeckel

8 YEARS

Heather Bui
Raymond Duncan
Bruce Lindemann
Jay Martin
Thoma Phens

7 YEARS

Fred Arias
Lizet Bande
Christopher (Ross) Bourne
Emily Clapper
James (Jim) Curry
Monica De La Cruz
John Espinosa
John Henkels
Jeanette Hughes
Daniel Keller
Erik Mora
David Neighbours
Sean Pritchett
Teresa Root
Michael Schubert
Marvin Smith
Lorri St. Clair
Catherine Walker
Peggy Anne Youell

6 YEARS

Donna Anderson
Mandy Arsaga
Rocky Berlanga
Neeta Bijoor
Eileen Callahan

Carmen Cardenas
Carrie Chambers
Arash Ghods
Alice Cubillos Hall
Andrew Bret Hanson
Allison Hata
Michele Hedge
Thad Hoffmaster
Kelly Hogan
Jaime Hulme (Davis)
Darren Kernaghan
Elton Kinkaid
Carrie Koss
Arthur (Art) Kumas
Neal Alan Lange
Kristine Lange
Jason Liljestrom
Nicholas (Nick) Arthur Louis
Cathalee Nelson
Joy O'Campo
Belinda Pena
Debbie Schuster
Andrew Wyllie

5 YEARS

Brateil Aghasi
Norma Alvarez
Alfonso Anguiano
Pamela Azanza
Karyn Barnes
Stephanie Brou
John Cain
Dale Camera
Sharlene Chan
Adam Connors
Raymond Contino
Misty Delomba
James Dennewill
James (Jim) Erickson
David Fanous
Kenneth (Ken) Francis
Janet Gamache
Vincent Guardian
Andres Guillen
Andrew Gutierrez
Linh Hang
Tim Hanst
Aaron Hauser
Kristen Jue
Eugene Kaneshiro
Joe Kaslowski

20

Our "Biggs"

Daniel Khalili
Jamie Koh
William Leavelle
Jason Liddell
Lauren Liljestrom
Monica Luna
Robert Mancebo
Joseph (Joe) Marton
Joshua Massari
Jacqueline (Jackie) Mejia
Steve Moreno
Lorena Muniz
Zachary Niles
Kylie Nuckols
Niamh (Neeve) O'Brien
Robin O'Shea
Carmen Orozco
Frank Ramirez
Noel Rayo
Laurie Schaefer
Laura Stahlberg
Charles Stevenson
Sue Swarth-Hatton
Jay Tanjuan
Jim Tupper
Kristen Turner
Miguel Vasquez

4 YEARS

Francisco Alvarado
Paolo Andres
M. Jay Arthur
April Balotro
Michael (Mike) Bargetto
Rahul Bhagat
Jessica Camargo
Kim Canada
Robin Canada
Tyler Cole
Jason Coles
Selina Cothran
Cheryl Davidson
Renee Davis
Darren Daye
Olivia Daye
Jimena Delatorre
Thomas Dorich
Mike Gallagher
Jane Go
Ursula Gonzalez
Rich Hewton
Jerry Hicks Jr.
Lynn Hughes
Brian Ireland
Debbie Jabbari
Say Jeon
Patty Jimenez
Kristin Keating
Sophia King
Karen Kuchinski

Jeff Lawrence
An Mai
Brianna McHenry
Joseph McKnight
Surya Metzler
Keturah Miller
Mark Mueller
Ahmed Muneeb
Erin O'Brien
Andrea Ortega
Bill Petersen
Mayra Pizeno
Liam Powers
Jessica Prescott
Karina Rabin
Jared Rabin
Jennifer Reichelt
Mark Reid
Lisa Rich
Jacquelyn Rivera
Michael Rossi
Devon Self
David Simkin
Erick Solera
Angela (Angie) Steen
Jennifer Takahashi
Quinn Tamm
Dalia Tanner
Courtney Trouten
Christopher Tzeng
Nancy S. Wallace
Shauna Werts-Drumm
Ronald Williams
Susan (Sue) Wise-Mueller
Thomas (Tom) Worth
Candice Yorke
Lori Zappas

3 YEARS

Lidia Anaya
Kelly Archung
Taylor Arnett
Ernest Ernie Atkins
Rachel Barron
Jonathan Bayert
Amy Boxx
Sue Brienza
Charles Caliman
Naomi Chason
oshua Cornejo
Cameron Crowner
Benjamin Dadbin
Stevie De Young
Sara DeVore
Diana Donjuan
Chad Faust
Susan Fehrenbacher
Jacqueline Gallardo-Hoffmaster
Priscila Garay
Edgar Garcia

Erika Gates
Ginny Gibialante
Randy Gordon
Megan Gorman
Daryl Gurden
Maria Hailey
Laurie Hancock
Steve Harrison
Ken Hashimawari
Mike Herlihy
Tracy Hermans
Cruz Hernandez
Crystal Hernandez
Henry Hoang
Bill Hsu
Adine Janson-Michel
Kaisa Johnson
James Kashiwada
Linda Kearns
Sophia Lam
Mitchell Lancaster
Victoria Law
Gustavo Lopez
Jesse Lott
Damion Loukas
Lisa Ly
Michael MacGregor
Diane Martin
Arthur (Art) Mayfield II
Jennifer McCart
Steve Meisenheimer
Kelly Meyers
Jacob Mize
Daniel Morgan
John Nasteff
Jennifer Necir
Minh Nguyen
Patrick Norris
Jonathan Ouellette
Mai-Thi Pham
Georgina Pinto
Carla Plaza
Matt Prince
Nicole Provansal
Alison Pu
Denzil Quick
Jason Quimby
Heidi Ravenhorst
Isaac Raymond
Lauren Reid
Albert Rocker
Amanda Salmon
Danny Schutt
David Scott
Steven Shwam
James Simmons
Ellyn Siskind
Danielle Skinner
Eric Strength
Jennifer Tamayo

Pauline Tedford
Chris Thompson
Tri Tran
Ashlee Vingle
Greg Warren
David Wells
Michelle Wong

2 YEARS

Alexa Aguilar
Tyler Ahtonen
Scott Aldas
Jay Alfonso
Patricia Anaya
April Anderson
Chris Anderson
Tim Andrews
Angelica Ayon
Don Bach
Heather Baker
Ami Bhakta
April Binasz
Sahara Birrueta
Alex Bonilla
Dane Bower
Jacqueline Bowinkel
Jack Boyl
Erin Boyl
Zachary Brandt
Susan Brandts
Amy Briant
Juli Buckenberger
Ashley-Rose Cameron
Allyson Cammell
Andrew Cardoso
Brian Carson
Laura Caudillo
Arielle Chernin
Kevin Chiu
JohnPaul Chong
Walter Clark
Aaron Contreras
Kathryn Cook
Grant Cushman
Margo Daoud
Pauline David
Emmercelle DeLeon
David Delgado
Tyler Denstad
Logan Diaz
Matthew Dobie
Joshua Dorman
Kristina Eckerman
Robert (Bob) Ericksen
Trisha Escamilla
Aurora Esquivel
Edward Farrell
Patty Fernandez
Mariana Fitz
Makenzie Flynn

Katie Fromkes
Emily Fuentes
Jerry Fuentes
Falguni Gala
Sandra (Iveth) Gamez
Christina Garcia
Christopher Gittings
Renee Glover
Adam Go
Lindsey Go
Cynthia Gonzalez
Jordan Greenberg
Sara Hamilton
Amanda Hannon
Brian Harrigan
Lesley Harris
Nicholas Herrera
Joan Howard
Yebin Hwang
Yuridia Jaimos
Alex Johnson
Kevin Kensinger
Michael Keyser
Richard Kim
Joshua Kim
Matthew Kinney
Mike Koplou
Jennifer Kraus
Corey Kroviak
Aman Lal
Richere Lamoureux
Andrew Le
Jennifer Le
Patrick Lechtenberger
Melissa Lee
Tony Lencioni
Ed Linck
Karen Llacsa
Debbie Logan
Tamara Lucier
Elaine Manneh
Bill Martin
Ray Martinez
Rochelle McClure
Andrew McMillan
Kristin Mehaffey
Andrea Michelle Merrell
Susanne Messmer
Genevieve Monreal
Antonio Montenegro III
Leslee Munoz
James Murrell
Tom Neja
Yen Nguyen
Deborah Ontiveros
Desiree Orozco
Dulce Ortega
Miriam Ortega
Fred Pacheco
Jennie Park

21 Our "Bigs"

Maritza Peraza
 Carlos Perez
 Al Preusch
 Leticia Pulos
 Jessica Reynoso
 Joanna Reynoso
 Amy Sales
 Elizabeth (Lisa) Sanchez
 Rob Schneider
 Dhruv Sharma
 Michael Shon
 Rita Silkensen
 Tyler Singletary
 Brian Skopal
 Sean Smith-Baldwin
 Christi Sobodos
 Reina Solis
 Enid Soriano
 David Stapish
 Calvin Tan
 Synthia Tandaju
 Ana Thomas
 Metztlil Uraje
 Karina Valderrama
 Chris Van Steenberg
 Michael Vo
 Angie Wahl
 Dianne Wall
 Dianna Wayne
 Kaysha Weiner
 Ryan Wojtkowski
 Elisa Wright
 Daniel Yoon
 Julie Zimmermann

1 YEAR

Lauren Abruzzo
 Luisa Acosta
 Paige Acuna
 Tania Aguilar
 Olivia Albrecht
 Aldo Almeida
 Julianna Alvarado-Arias
 Robert Anderson
 Peter Antone
 Doug Antone
 Neda Anvar
 Jennifer Arblaster
 Joan Ashley
 Andrew Assapimonwait
 Danyella Atkinson-Wilder
 Camille Attell
 Jacob Atuatasi
 Erkut Aykutlug
 Landon Azling
 Yesenia Barajas
 Austin Barker
 Frank Battaglia
 Jason Bernal
 Samuel Bersamin

Jason Billings
 Jannia Blas
 Mary Botkin
 Kayla Bowler
 Ashley Bowman
 Phil Bowman
 Philip (Phil) Bres
 Shannon Bridges
 Erica Brito
 Danielle Brooks
 Michael Brunn
 Madeline Buehlmeyer
 Peter Burke
 Jeffrey Butler
 Daniel Byun
 Michael Camson
 Oscar Cancino
 Sergio Cardenas
 David Cardenas
 Evan Carey
 Jada Carmichael
 Valisa Carney
 Sydney Carreras
 Marillee Carroll
 Danielle Castaneda
 Renee Castillo
 Joan Castner
 Amalia Castorena
 Anabel Castro
 Jennifer Ceron
 Ashleigh Chau
 Jennifer Chinchilla
 Chad Church
 Briana Cialdella
 Yalile G. Cisneros
 Donald Collie
 Lynda Collie
 Esteban Conde
 Danielle Congelliere
 William (Dave) Cook
 James Coons
 Mariah Corona
 Valery Correa
 Matthew Cors
 Randall Cox
 Alexandria Coyhis
 Catherine Crevier
 Nicholas Crosson
 Bryan Cubero
 Chris Czach
 Raj Dalal
 Ravi Dalal
 Jenna Davey
 Cassidy Davila
 Kimberly De Santiago
 Dustin DeGuevara
 Marcos Delgado
 Alexandra Diaz
 Jay Do
 Phuung Do

Armando Dominguez
 Jordan Dudeck
 Troy Dunkel
 Kimberli Durfield
 Steven Echavarria
 Anthony Eisenman
 Edward Ellis
 Heidi Elrahib
 Stacy Espinoza
 Erik Estrada
 Jose Farias
 Olivia Faulkner
 Jessica Fernandez
 Eric Ferrer
 Jada Fields
 Natasha Fierro
 Rigoberto Figueroa
 Erin Forbes
 Leonard & Bill Fox
 Vanessa Frias
 Christopher Fuentes
 Judith Fuentes
 Fabian Fule-Ver
 Paige Fullmer
 Aliyah Garcia
 Joanna Garcia
 Kayla Garibo
 Abigail Gesmundo
 Stacey Giffen
 Jennifer Ceron
 Sean Grange
 Diana Green
 Mirna Gutierrez
 Brian Gutierrez
 Moises Gutierrez
 Sabrina Guting
 Edward Guynn
 Vanessa Guzman
 Amanda Haas
 Melinda Haley
 Nicole Halpin
 Sarah Hammond
 James Hammond
 Laurie Hance
 Amanda Hastings
 Michelle Hauck
 James Hayes
 Greg Hebets
 Philip Heimerdinger
 Lesslie Hernandez
 Sergio Hernandez
 Dayana Hernandez
 Audree Hernandez
 Tom Hong
 Megan Hong
 Rachel Howard
 Jenny Huang
 Veronica Huerta
 Maria Hysmith
 Aharon Infante

Mohammad Jaffrey
 Kevin Jagnandan
 Alina Jaramillo
 Katherine (Tracey) Jensen
 Justin Jerome
 Jiva Jimmons
 Bryan Jolliff
 Nicole Jones
 Aaliyah Jones-Hall
 Candace Joseph
 Steven & Ryan Kagy
 Jerry Kahn
 Varag Kamali
 Kelly Kent
 Tifany Khakdoust
 Shannan Khan
 Michelle Khine
 Erin Kim
 Liah Kim
 Joanne Kim
 Brian Kinsley
 Adam Klugman
 Tanya Kolawole
 Kameron Krise
 Andrew Krongold
 Rashi Kumar
 Nicole Kuntjoro
 Kevin Kuntjoro
 Cindy Kuo
 Randy Kwon
 Keegan Kyle
 Kim La
 Mike Lacy
 Lynn Lacy
 Oai Lam
 Mimosa Lam-my
 Lexie Landy
 Anne-Marie Larsen
 Evelyn (Hyun) Lee
 Kristina Lee
 Robert & Bob Lehr
 Riley Leivas
 Katy Lewis
 Terance Lewis
 Brianna Lombera
 Melinda Lopez
 Salma Lopez
 Ashley Lopez
 Miguel Lopez
 Mendy Losh
 Jennifer Luis
 Shaun Lund
 Sandra Luo
 Monica Luton
 Alexis Macias
 Cynthia Madrigal
 Babak Mahdavi
 Aidee Maldonado
 Shane Maloney
 Emilie Marcinkowski

Veronica Marinez
 Joe Markowski
 Quentin Marshall
 Taylor Marshall
 Jenette Martinez
 Serena Martinez
 Nader Massoudi
 Mark Matyazic
 Kate Maxson
 Anika May
 Lee Mayer
 Alexa McCarthy
 Audrey McCombs
 Richard (Rick) McEwan
 Ingrid McKibben
 Shelby McMahan
 Allison McMillen
 Alan Medina
 Puneet Mehru
 Heidi Millard
 Debbie Miller
 Trisha Miller
 Briana Milstead
 Samantha Monfills
 Thierry Montoya
 Joleen Morales
 Justin Moran
 Elize Morin
 Mariano Morua
 Rachel Mulkerin
 Ryanne Mumm
 Wayne Munchel
 Cecilia Murillo
 Sean Murphy
 Michelle & Chellina Myers
 Jessica Myngheer
 Jonnell Myren
 Gisselle Nava
 Megan Navarette
 Anthony Navarro
 Rikilynn Nehez
 Chadd Nervig
 Nathan Ng
 Carla Ng
 Tommy Nguyen
 Tieu-y Nguyen
 Angela Nguyen
 Kristine Nguyen
 Tien Nguyen
 Christian Noli
 Erin Novini
 Misha Novini
 Dale O'Banion
 Claire O'Melveny
 Yahaira Ortiz
 James Ouyang
 Lucia Palacios
 Eric Palmer
 Esther Park
 Kaitlyn Park

22

Our "Bigs"

Ethan Parsa
Sahar Parsi
Kyle Patel
Charli Paysinger
Starla Peithman
Eduardo Penaloza
Mialani Pendilla
Alyssa Penn
Karen Penwarden
CJ Perez
Melanie Perez
Rogelio Perez
Riley Peters
Alice Phan
Mint Phowborom
Christy Picklesimer
Steve Pitchford
Gayle Pizarro
Shannon Pooler
Cayleen Portillo
Juan Prado
Valeria Prado
Belinda Prado
David Prewitt
Quentin Priddy
Melissa Propp
Emily Provansal
Francis Quimby
Nanditha Raghavan
Brianna Ramirez
Patricia Ramirez
Marianna Ramirez
Judit Rangel
Tyler Reesor
Francisco Regalado
Vincent Reid
Benjamin Rejniak
Rene Revenaugh
Veronica Reyes
Jessica Rice
Sloane Richardson
Melanie Rios
Diana Rivera
Gisele Roa
Ajay Roberts
Gabrielle Robles
Andrew Rock
Ana Rodriguez
Michelle Rogers
Fernando Rosales
Kristina Rosete
Anissa Roshanzaer
Alex Ross
Elizabeth Ross
Eric Rouse
Lindsay Rowe
Janella Roxas
Adrian Ruiz
Valerie Ruiz
Julie Ruvalcaba

Marily Ruvalcaba
Paola Salazar
Diocelin Salud
Juan Sanchez
Alejandro (Alex) Sanchez
Octavio Sandoval
Greg Santiago
Victoria Santiago
Camille Santos
Paula Schlue
Tina Schroeder
Nathan Schuch
Paige Schuck
Kevin Scott
Ali Sener
Lauren Shaffer
Brendan & Lauren Shaffer
Nathan Shapiro
Calvin Shen
Kathleen Shepard
Bonita Shepherd
Crystal Shif
Crystal Shimabukuro
Veronica Silva
Kieran Silva

Mary Skrenes
Mason Smith
Jeanette Solorio
Eumi Son
Omar Sosa
Zachary Stangle
Marilyn Stemper
Amber Stephens
Jeff Stern
Blake Street
Don Suskind
Touraj (T.J) Tabatabai
Brandon Tanner
Rachana Tataria
Jon Tateyama
Charlotte Taylor
Christopher Thomson
Noelle Ticman
Scott Timpani
Kevin Tiscareno
Tiffany Tona
Elisa Torres
Steven Torres
Ashlynn Torres
Diana Torres

Yvonne Totty
Tom Totty
Steven Tran
Lily Tran
Kaitlyn Trayan
Laura Beth Truesdell
Matthew Tsou
Cinthya Urrego
Kalani Vale
Luis Valencia
Yolanda Vann
Nancy Vazquez
Dyanara Velasquez
Erik Velazquez
Nisha Verma
Guadalupe Villalpando
Omar Vinas
Nicole Vink
Joanne Vo
Danny Vo
Donna Vo
Matt Vukelich
John Wakefield
Candice Wallerstein
Annie Wang

Michelle Weiss
Carly Wellrich
Corey & Ian White
Bransby Whitton
Michael Wiczorek
Raymond Williams
Fleur Williams
Kevin Wood
Toby Woodward
Kaiya Wychgel
Conner Xia
elvira Xu
Diana Yanez
Jeffrey Yeung
Michael Yi
Austin Yi
Dana Yoo
Paul Yurashevich
Joanna Zada
Victor Zapiain
Kathryn Zarkos
Anais Zavala
Omar Zermeno

What if...

every child
graduated
from high
school?

every child
grew up to
have a job that
supported
their family?

every child
lived up
to their full
potential?

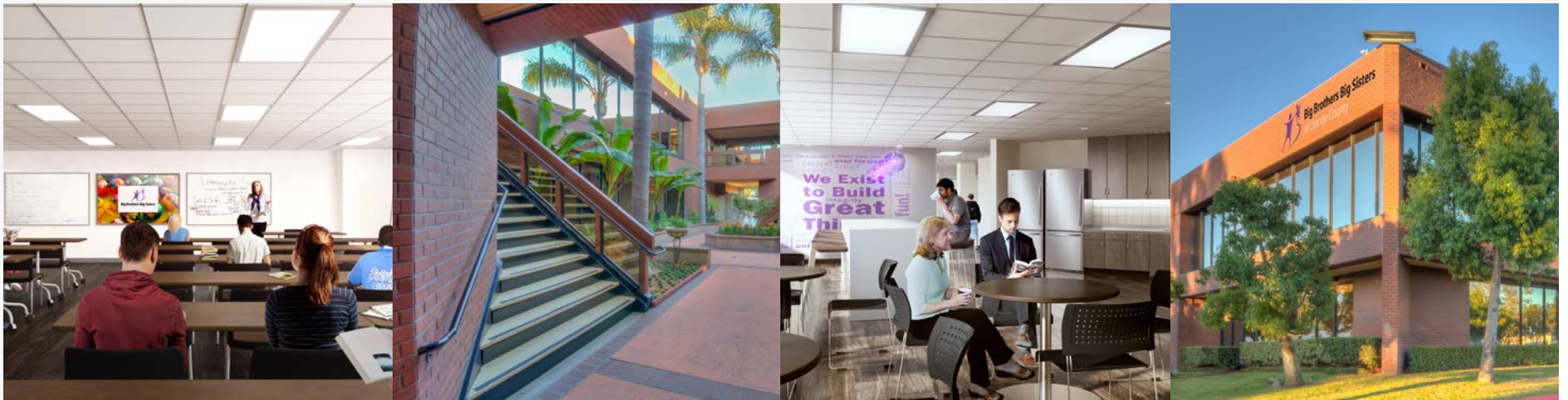
It would be
the start of
something
BIG!

IT STARTS WITH YOU

23
New
Building

Our Next BIG Thing...

Nearly 10,000 children, parents and volunteers visit our agency annually. Our new facility will provide a welcoming environment for all guests while granting our team the ability to serve each child, Big and parent more holistically and with higher quality.



Capital Campaign

\$2 million
in pledges
to-date...

Naming
opportunities
available...



\$3 MILLION TARGET



The capital campaign will fund and build our new, larger facility in Santa Ana, a city where more than 1/3 of our “Littles” live! We hope that you will consider being part of our legacy and our **impact on the lives of thousands of children in our community**, helping change their lives and living up to their full potential.”

—Melissa Beck, CEO, Big Brothers Big Sisters
Orange County & Inland Empire

DO Something.
BE Something.
START Something
BIG!



Big Brothers Big Sisters
of Orange County | The Inland Empire

bigbrooc.org • bigbroie.org • 714.544.7773

1801 East Edinger
Santa Ana, CA 92705

